

# Cast iron swing check valve

BS EN 12334:2001 PN16

## SIZES

Flanged to EN 1092-2 PN16

Range	DN65	DN80	DN100	DN125	DN150	DN200	DN250	DN300
Code	BR 78	BR 79	BR 80	BR 81	BR 82	BR 83	BR 84	BR 85

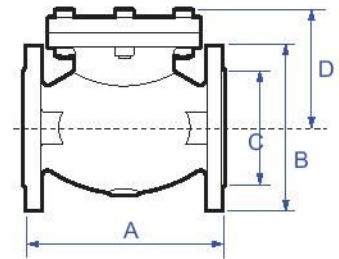
## DIMENSIONS (mm)

Range	DN65	DN80	DN100	DN125	DN150	DN200	DN250	DN300
A	215.9	241.3	292.1	330.2	355.6	495.3	662.3	698.5
B	185	200	220	250	285	340	405	460
C	122	138	158	188	212	268	320	378
D	132.5	141.5	163	197	212	257	298.5	330.5
Weight kg	17.30	141.5	37.50	40.95	51.72	120.00	218.00	281.00



## FLOW RATES (m³/h)

Size	Flow l/s	Kv m3/h	Size	Flow l/s	Kv m3/h
65mm	1.50	63.00	125mm	5.00	173.00
	5.00	150.00		10.00	361.00
	8.00	161.00		20.00	602.00
80mm	2.00	75.00	150mm	30.00	689.00
	6.00	202.00		7.00	298.00
	12.00	328.00		20.00	735.00
100mm	20.00	428.00	200mm	40.00	1231.00
	4.00	168.00		15.00	520.00
	10.00	353.00		40.00	1210.00
	15.00	447.00		90.00	1835.00
	20.00	516.00	250mm	Fully Open	2725.00
			300mm	Fully Open	3850.00



## VALVE SUITABILITY

Steam	Water	Oil	Air	Gas Inert	Gas Combustible	Gas Corrosive	Gas Oxygen
✗	✓	✗	✗	✗	✗	✗	✗

## MATERIAL SPECIFICATION

Component	
Body	Cast iron
Body seating	Gunmetal
Disc	Cast iron
Disc assembly	Cast iron
Disc facing ring	Gunmetal
Disc nut	Brass
Cover	Cast iron
Cover gasket	Graphite non asbestos
Hinge pin	Stainless steel
Hinge pin plug	Brass
Hinge	Ductile iron
Stop pin	Stainless steel
Seat	EPDM
Seat ring	Gunmetal
Gasket	Asbestos free
Springs	Stainless steel

## MAX. PRESSURE TEMPERATURE RATINGS

Size	Max. Working Pressure (bar)		Test Pressure (bar)	
	Temperature up to 120°C	Temperature up to 230°C	Shell	Seat
DN65 to DN300	16.0	11.8	24	17.6

Size	Max. Working Pressure (psi)		Test Pressure (psi)	
	Temperature up to 248°F	Temperature up to 246°F	Shell	Seat
DN65 to DN300	232.1	171.1	348.1	253.8

Temperature range -10°C - +120°C (Non shock)

## PRESSURE & TEMPERATURE RATINGS

