

Cast iron wafer check valve PN16

Wafer dual plate check valve, 16bar from -10 °C to 120 °C

BS EN 12334:2001 and face to face dimensions comply to BS EN 558-1

SIZES

Range	DN65	DN80	DN100	DN125	DN150	DN200	DN250	DN300
Order code	BR 98	BR 99	BR 100	BR 101	BR 102	BR 103	BR 104	BR 105

DIMENSIONS (mm)

A	54	57	64	70	76	95	108	143
B	78	90	115	141	170	210	273	324
C	126	141	161	191	217	272	327	382
Weight kg	2.39	3.20	4.80	7.60	10.00	14.00	23.56	36.00

FLOW RATES

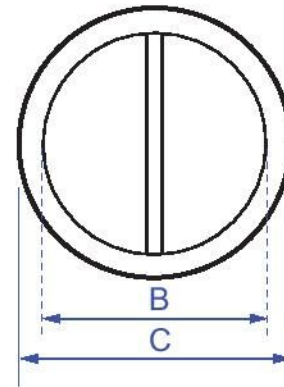
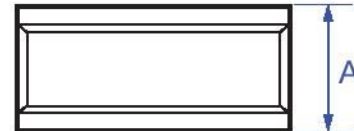
Size	Flow l/s	Kv m ^{3/h}
DN65	1.50	57.00
	2.50	81.00
	6.00	126.00
	10.00	139.00
DN80	1.50	55.00
	2.50	85.00
	6.00	140.00
	10.00	167.00
DN100	2.50	101.00
	8.00	200.00
	15.00	243.00
	25.00	259.00
DN125	4.00	135.00
	6.00	190.00
	15.00	336.00
	30.00	413.00
DN150	6.00	216.00
	10.00	338.00
	20.00	556.00
	40.00	747.00
DN200	10.00	423.00
	20.00	797.00
	40.00	1340.00
	80.00	1770.00
DN250	160.00	2600.00
DN300	220.00	4300.00

VALVE SUITABILITY

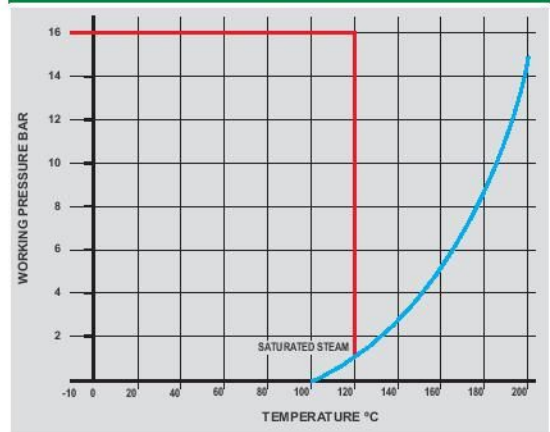
Steam	Water	Oil	Air	Gas Inert	Gas Combustible	Gas Corrosive	Gas Oxygen
X	✓	X	X	X	X	X	X

MATERIAL SPECIFICATION

Component	Material
Body	Cast iron
Hinge pin	Stainless steel
Disc	Stainless steel
Seat	NBR
Stop pin	Stainless steel
Pin retainers	Stainless steel
Plate	Stainless steel
Spring	Stainless steel
Washer	PTFE
Gasket	EPDM



PRESSURE & TEMPERATURE RATINGS



PRESSURE & TEMPERATURE RATINGS

Size DN65 to DN300	Maximum Working Pressure (bar)		Test Pressures (bar)	
	Temp 120° C	Temp 120° C	Shell	Seat
	16bar	16bar	24	17.6

Size DN65 to DN300	Maximum Working Pressure (psi)		Test Pressures (psi)	
	Temp 248° F	Temp 248° F	Shell	Seat
	232.1psi	232.1psi	348.1	253.8

Temperature range - 10 °C - +120°C.